


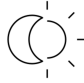





sensIQ S

EVO COM1 - black
 EAN 4007841 034979
 Article number 034979



		2000 W					Teach		5 years
infrared sensor 3 x 100°	3 zones scalable 2-20m	max. 2000 W	IP54	2 - 2000 lux daylight operation	5 sec - 15 min	ideal 2 - 5 m	Teach mode	energy saving	manufacturer's warranty steinel.de/ garantie

Function description

The evolution of perfection. The reference in compact design. Handsome addition! The sensIQ S is just as perfect in form and functional diversity as its larger role model. A look that architects like. This designer motion detector was developed specifically for wall mounting though. Being altogether more compact than its big brother, the sensIQ S nestles up against the facade, perfectly harmonising with modern, purist architecture. Its inner values are spectacular too because it comes with the same highly intelligent features and setting options as the sensIQ.

Technical specifications

Dimensions (L x W x H)	128 x 114 x 74 mm	Technology, sensors	passive infrared
With motion detector	Yes	Mounting height	2 – 5 m
With remote control	Yes	Mounting height max.	5,00 m
Version	COM1 - black	Optimum mounting height	2 m
PU1, EAN	4007841034979	Detection angle	300 °
Type	Motion detectors	Angle of aperture	90 °
Application, place	Outdoors, Indoors	Sneak-by guard	Yes
Includes corner wall mount	Yes	Capability of masking out individual segments	Yes
Installation	Surface wiring	Electronic scalability	No
IP-rating	IP54	Mechanical scalability	Yes
Ambient temperature	from -20 up to 50 °C	Switching zones	1360 switching zones
Material	Plastic	Twilight setting	2 – 1000 lx
Mains power supply	100 – 240 V / 50 – 60 Hz	Time setting	5 s – 15 Min.
Switching output 1, number of LEDs / fluorescent lamps	50 pcs.	Basic light level function	No
Fluorescent lamps, electronic ballast	600 W	Twilight setting TEACH	Yes
		Constant-lighting control	No

sensIQ S

EVO COM1 - black
EAN 4007841 034979
Article number 034979



Technical specifications

LED lamps < 2 W	100 W
LED lamps > 2 W < 8 W	300 W
LED lamps > 8 W	600 W
Capacitive load in μF	176 μF

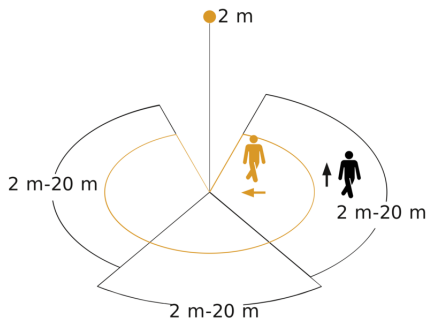
Interconnection	Yes
Product category	Motion detector

sensIQ S

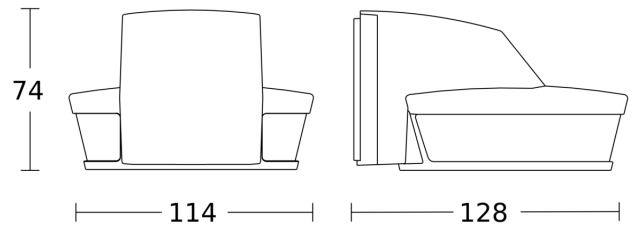
EVO COM1 - black
 EAN 4007841 034979
 Article number 034979



Detection Zone

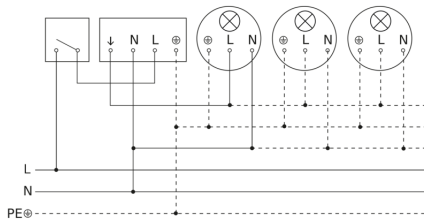


Dimension Drawing

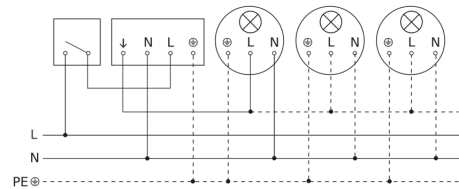


Possible mounting height: 2,00 m - 5,00 m
 Orange: radial
 Black: tangential
 3 scalable zones

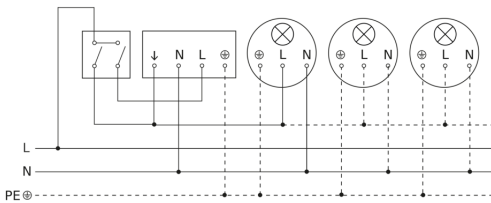
Light without neutral conductor



Light with neutral conductor



Connection using two-circuit switch for manual and automatic operation



Circuit diagram Connection via a changeover switch for continuous and automatic operation

